

BALLERIA

РАПСОДИЯ НА ТЕМУ ПАГАНИНИ

С. РАХМАНИНОВ

INTRODUCTION

Allegro Vivace

Handwritten musical notation for the Introduction section, measures 1-4. The notation is on two staves. Measure 1 has a fermata over a half note. Measure 2 has a fermata over a half note. Measure 3 has a fermata over a half note. Measure 4 has a fermata over a half note. There are handwritten annotations: "t-20" and "tr" above measure 2, "Piaatti" and "Cossa" below measure 3, and "sf" above measure 4. The number "5" is written above the first two measures.

VAR. I (Precedente)

Handwritten musical notation for Variation I, measures 1-4. The notation is on two staves. Measure 1 has a fermata over a half note. Measure 2 has a fermata over a half note. Measure 3 has a fermata over a half note. Measure 4 has a fermata over a half note. There is a handwritten annotation "p" below measure 1.

Handwritten musical notation for Variation I, measures 5-8. The notation is on two staves. Measure 5 has a fermata over a half note. Measure 6 has a fermata over a half note. Measure 7 has a fermata over a half note. Measure 8 has a fermata over a half note.

Handwritten musical notation for Variation I, measures 9-12. The notation is on two staves. Measure 9 has a fermata over a half note. Measure 10 has a fermata over a half note. Measure 11 has a fermata over a half note. Measure 12 has a fermata over a half note. There is a handwritten annotation "Cam. lli" and "mf" above measure 9.

Handwritten musical notation at the bottom of the page, including a treble clef, a key signature of one sharp (F#), and a time signature of 3/4. The notation is on a single staff and includes various musical symbols and markings.

2. 2 3 | 6 | x 4 2 | 2 | x 4 2 | 1 | x 4 2 | 1 | x 4 2 | 1 | x 4 2 | 6 | x 4 2 | 2 | x 4 2 |

Tr. 20
dim.
P. H. 1 P
G. cassa p

2
Campanelli mf
P

dim.
P. H. 1 P
P. P
C. cassa

TEMA
2° istesso tempo 3

VAR. II
2° istesso tempo 4

8 16 8 8

VAR. III
2° istesso tempo 6

5 8 6 15 7
tacet al 19

19 P no 11
20 P no
timp.
dim.

Patteria

VAR. VIII
Tempo I

Handwritten musical notation for the first system of 'Patteria'. It consists of two staves. The first staff has a treble clef and a key signature of one sharp (F#). The second staff has a bass clef. The notation includes various rhythmic values: 1, 8, and 12. There is a large 'IV' written above the first staff. A box containing the number '21' is located above the second staff.

Handwritten musical notation for the second system of 'Patteria'. It consists of two staves. The first staff has a treble clef and a key signature of one sharp (F#). The second staff has a bass clef. The notation includes various rhythmic values: 12, 19, and 22. There is a box containing the number '22' above the first staff and a box containing the number '23' above the second staff. The text 'G. casa p' is written above the second staff. The text 'VAR. IX' is written above the second staff, and 'T.to 2'istesso tempo' is written below the second staff.

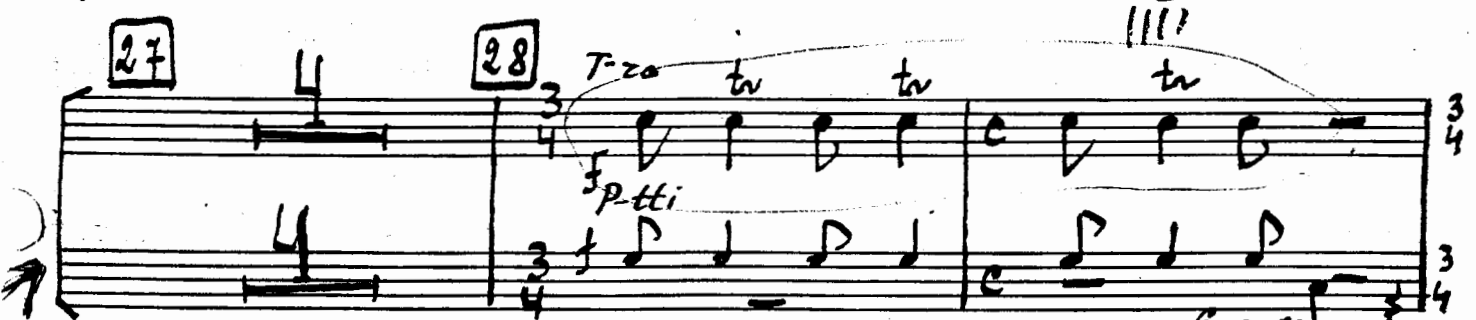
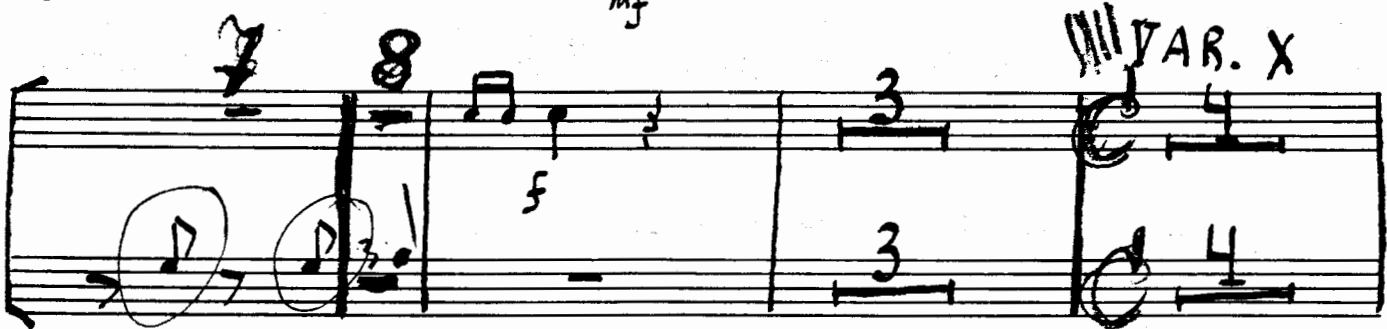
Handwritten musical notation for the third system of 'Patteria'. It consists of two staves. The first staff has a treble clef and a key signature of one sharp (F#). The second staff has a bass clef. The notation includes various rhythmic values: 12, 19, and 22.

Handwritten musical notation for the fourth system of 'Patteria'. It consists of two staves. The first staff has a treble clef and a key signature of one sharp (F#). The second staff has a bass clef. The notation includes various rhythmic values: 12, 19, and 22.

Handwritten musical notation for the fifth system of 'Patteria'. It consists of two staves. The first staff has a treble clef and a key signature of one sharp (F#). The second staff has a bass clef. The notation includes various rhythmic values: 12, 19, and 22. There is a box containing the number '24' above the first staff and a box containing the number '25' above the second staff.

Handwritten musical notation for the sixth system of 'Patteria'. It consists of two staves. The first staff has a treble clef and a key signature of one sharp (F#). The second staff has a bass clef. The notation includes various rhythmic values: 12, 19, and 22. There is a box containing the number '24' above the first staff and a box containing the number '25' above the second staff.

Handwritten musical notation for the seventh system of 'Patteria'. It consists of two staves. The first staff has a treble clef and a key signature of one sharp (F#). The second staff has a bass clef. The notation includes various rhythmic values: 12, 19, and 22.



Batteria

29

Cam.lli

Col.

1 2 3 4 1 2

30

VAR. XI
Moderato

34

VAR. XII

Tempo di menuetto

First system of VAR. XII, featuring two staves with rests and a 2/4 time signature.

V-ni I

Second system of VAR. XII, starting with measure 32 and ending with measure 33, including a 4/8 time signature.

VAR. XIII

Allegro

Third system of VAR. XIII, starting with measure 34 and ending with measure 35, including a 2/4 time signature.

Picc. Fl. cl.

Fourth system of VAR. XIII, starting with measure 35 and ending with measure 36, including a 2/4 time signature.

VAR. XIV

2° stesso tempo

Fifth system of VAR. XIV, starting with measure 36 and ending with measure 37, including a 2/4 time signature.

VAR. XXII

un poco più vivo

Sixth system of VAR. XXII, starting with measure 38 and ending with measure 39, including a 2/4 time signature.

(Allegro)

Seventh system of VAR. XXII, starting with measure 40 and ending with measure 41, including a 2/4 time signature.

Poco cresc.

Eighth system of VAR. XXII, starting with measure 42 and ending with measure 43, including a 2/4 time signature.

P. tti

Ninth system of VAR. XXII, starting with measure 44 and ending with measure 45, including a 2/4 time signature.

Piatti cresc.

ss

ha II

Batteria

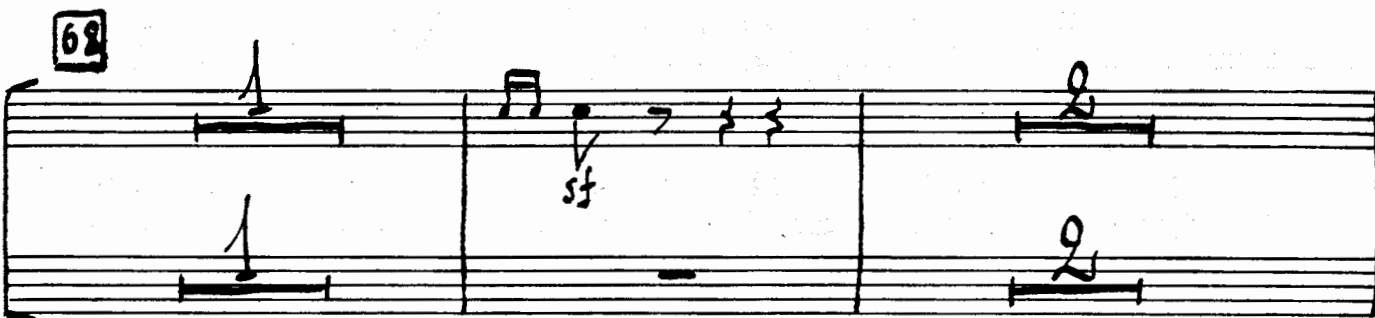
65 66



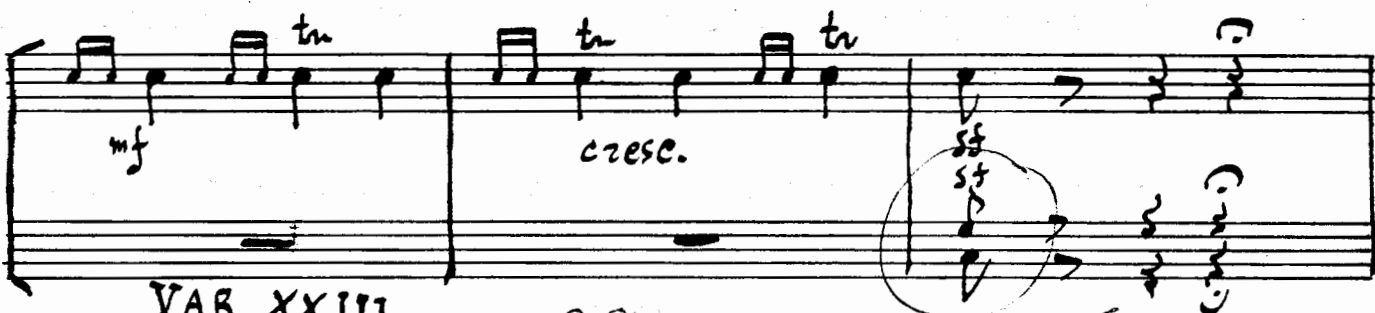
67



68

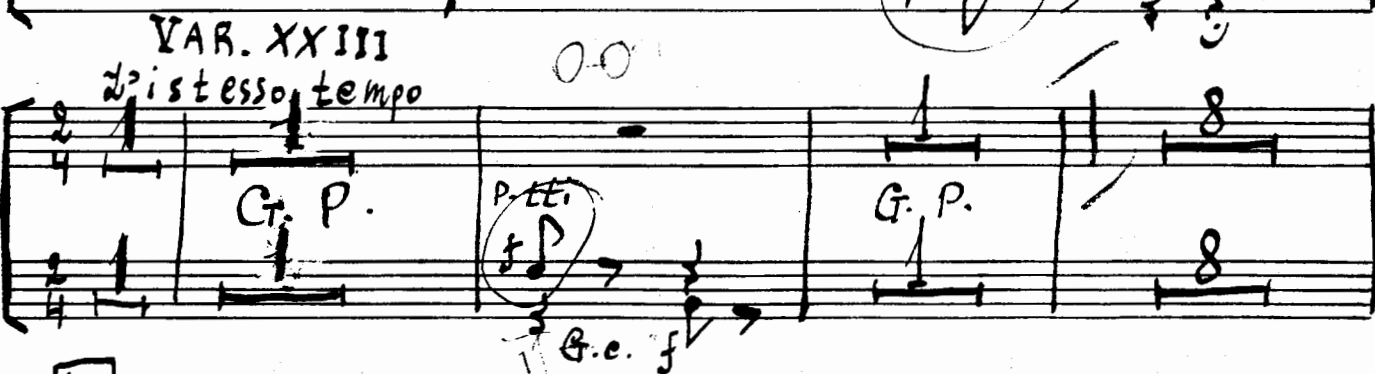


mf cresc. sf sf



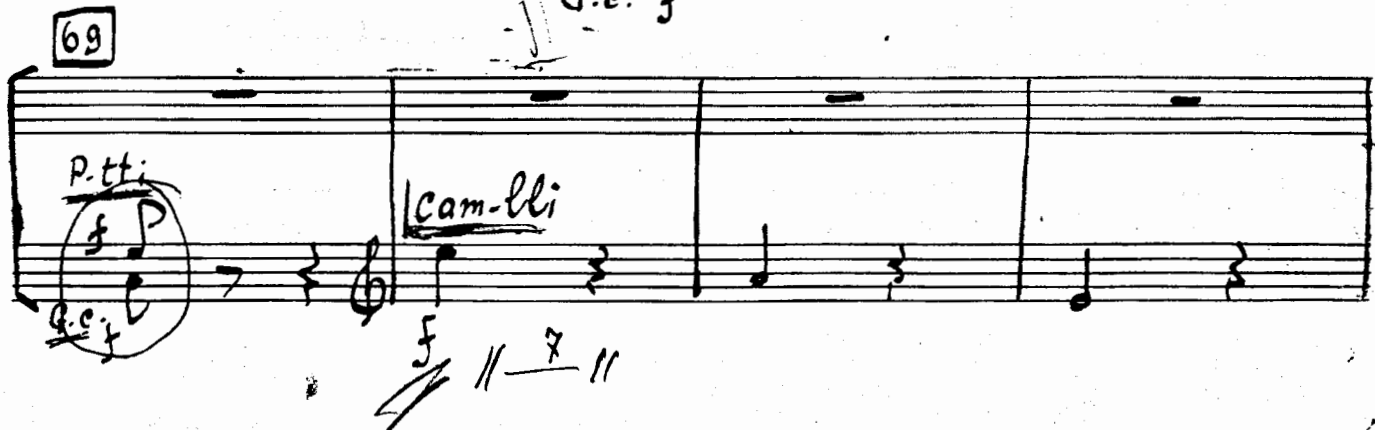
VAR. XXIII
2° istesso tempo

Gr. P. P. tt. G. P.



69

P. tt. cam-lli



T-20

Campanelli

70 T-20

P.tti

B. cassa

71

72

tr

tr

tr

3

3

73

VAR. XXIV

A tempo un poco meno mosso

ff

Com

molto

74

p

Batteria

Handwritten musical score for a drum set (Batteria). The score is written in treble clef and includes a key signature of one sharp (F#). The notation is as follows:

- Measure 75:** Snare (rest), Tom (rest), Hi-hat (rest), Cymbal (rest), Bass Drum (rest). A box containing "75" is above the staff. A "5" is written above the staff.
- Measure 76:** Snare (rest), Tom (rest), Hi-hat (rest), Cymbal (rest), Bass Drum (rest). A box containing "76" is above the staff. A "4" is written above the staff.
- Measure 77:** Snare (rest), Tom (rest), Hi-hat (rest), Cymbal (rest), Bass Drum (rest). A box containing "77" is above the staff. An "8" is written above the staff.
- Measure 78:** Snare (rest), Tom (rest), Hi-hat (rest), Cymbal (rest), Bass Drum (rest). A box containing "78" is above the staff. A triangle symbol is above the staff.
- Measure 79:** Snare (rest), Tom (rest), Hi-hat (rest), Cymbal (rest), Bass Drum (rest). A box containing "79" is above the staff. A "4" is written above the staff.

Below the main score, there is a section with measures 80 through 84, each marked with a box containing the measure number. The notation for these measures is as follows:

- Measure 80:** Snare (rest), Tom (rest), Hi-hat (rest), Cymbal (rest), Bass Drum (rest). A box containing "80" is above the staff. A "4" is written above the staff.
- Measure 81:** Snare (rest), Tom (rest), Hi-hat (rest), Cymbal (rest), Bass Drum (rest). A box containing "81" is above the staff. A "5" is written above the staff.
- Measure 82:** Snare (rest), Tom (rest), Hi-hat (rest), Cymbal (rest), Bass Drum (rest). A box containing "82" is above the staff. A "6" is written above the staff.
- Measure 83:** Snare (rest), Tom (rest), Hi-hat (rest), Cymbal (rest), Bass Drum (rest). A box containing "83" is above the staff. A "7" is written above the staff.
- Measure 84:** Snare (rest), Tom (rest), Hi-hat (rest), Cymbal (rest), Bass Drum (rest). A box containing "84" is above the staff. An "8" is written above the staff.

The score includes various musical notations such as rests, eighth notes, and dynamic markings like "p" (piano) and "mf" (mezzo-forte). The score is written in a style typical of handwritten musical notation.

79

P. tti

G. cassa

80

cresc.

cresc.

sf

sf

sf

p